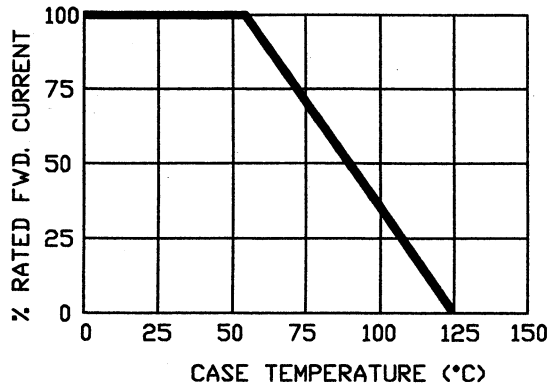


CURRENT DERATING

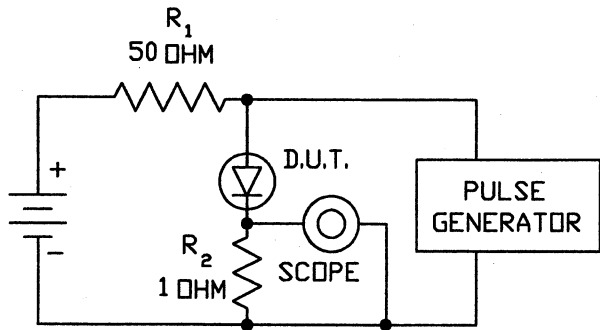


REVISIONS			
ISSUE	DESCRIPTION	DATE	APPROVAL
A	RELEASED	5/24/21	<i>[Signature]</i>

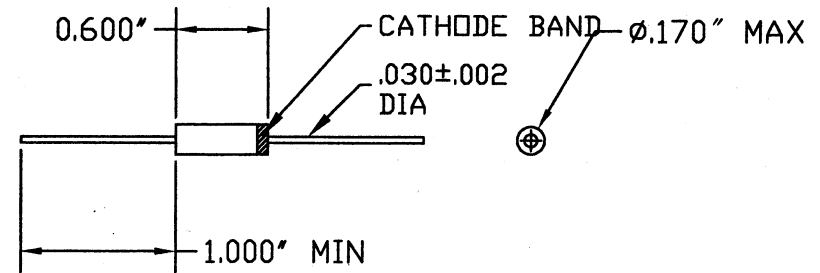
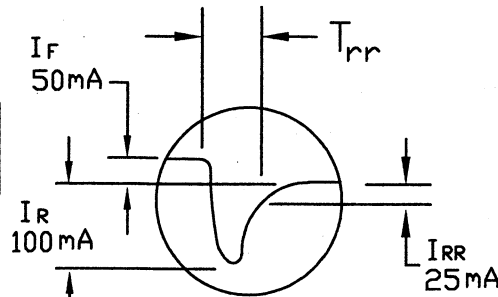
ELECTRICAL CHARACTERISTICS

PEAK REVERSE VOLTAGE	30KV
MAX PEAK SURGE	10A
AVERAGE FORWARD CURRENT IN 40°C	100mA
AVERAGE FORWARD CURRENT IN 55°C DIL	220mA
Vf @ 100 mA	50V
Ir @ 20 KV	1µA
Ir @ 100°C	30µA
MAX Trr	100 NANDSEC.
AMBIENT OPERATING TEMPERATURE RANGE	-55 - +125°C
STORAGE TEMPERATURE RANGE	-55 - +150°C

TYPICAL REVERSE RECOVERY WAVEFORM



R₁, R₂ NON-INDUCTIVE RESISTORS
 PULSE GENERATOR—HEWLETT PACKARD 214A OR EQUIV.
 IKC REP. RATE, 10µs PULSE WIDTH
 ADJUST PULSE AMPLITUDE FOR PEAK I_R



MATERIAL			FINISH		HEAT TREAT			
UNLESS OTHERWISE SPECIFIED DIMENSIONS ARE IN INCHES DIMENSIONAL TOLERANCES			TITLE		WEIGHT			
FRAC.	DEC.	ANG.	ED3103		ELECTRONIC DEVICES, INC. YONKERS, NEW YORK			
± 1/64	± .005	± 30'	DRAWN	Y.K. <i>[Signature]</i>			DATE	5/24/2021
SCALE			CHECKED	DATE		SIZE	DRAWING NUMBER	ISSUE
NEXT ASSY.			MFG. APP.	DATE		A	ED3103	A
ND. REQ'D			Q.C. APP.	DATE				
			ENG. APP.	DATE				

THIS DRAWING IS TO BE USED AS A REFERENCE TO SERVICES ON WORK PERFORMED BY DR FOR ELECTRONIC DEVICES INC. AND IS FURNISHED SUBJECT TO THE CONDITION THAT IT SHALL NOT BE REPRODUCED, COPIED, LOANED OR OTHERWISE SIMILARLY DISPOSED OF, DIRECTLY OR INDIRECTLY, AND IS NOT TO BE DISCLOSED TO THIRD PARTIES WITHOUT FIRST OBTAINING ELECTRONIC DEVICES INC. SPECIFIC WRITTEN PERMISSION.