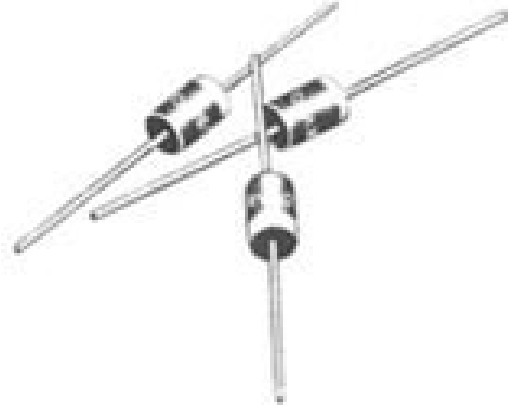




RWB

5 AMPERE FAST RECOVERY AXIAL LEAD RECTIFIERS

- PRV TO 1,000 VOLTS
- HIGH TEMPERATURE STABILITY
- HIGH SURGE CAPABILITY
- AVALANCHE CHARACTERISTICS



| | | | | | | | |
|------------|--------|--------|--------|--------|--------|--------|--------|
| PRV | 50V | 100V | 200V | 400V | 600V | 800V | 1000V |
| RWB*SERIES | RWB005 | RWB010 | RWB020 | RWB040 | RWB060 | RWB080 | RWB100 |

*Suffix "A" 150 NANO SEC. MAX. See Fig.#4

*Suffix "B" 250 NANO SEC. MAX. See Fig.#4

| ELECTRICAL CHARACTERISTICS at T _A =25°C Unless Otherwise Specified | RWB SERIES FAST RECOVERY |
|--|--------------------------|
| Max. DC Reverse Current @ PRV and 25°C, I _R | 5 μA |
| Max. DC Reverse Current @ PRV and 100°C, I _R | 250 μA |
| Max. Forward Voltage Drop @ 5.0Amps, V _F | 1.25Volts |
| Ambient Operating Temperature Range, T _A | -55 °C to +150 °C |
| Storage Temperature Range, T _{STG} | -55 °C to +150 °C |
| Max. One-Half Cycle Surge Current, I _{FM} (Surge) @ 60Hz | 350 Amps |

EDI reserves the right to change these specifications at any time without notice.

FIG.1

OUTPUT CURRENT vs AMBIENT TEMPERATURE

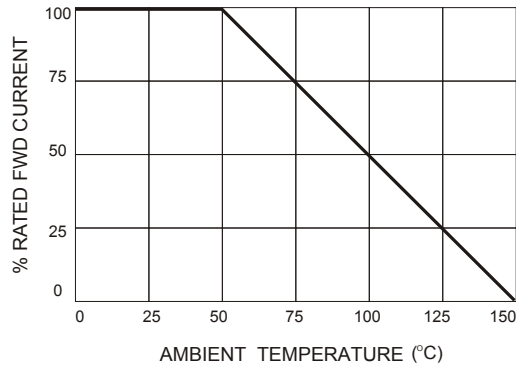


FIG.2

NON-REPETITIVE SURGE CURRENT

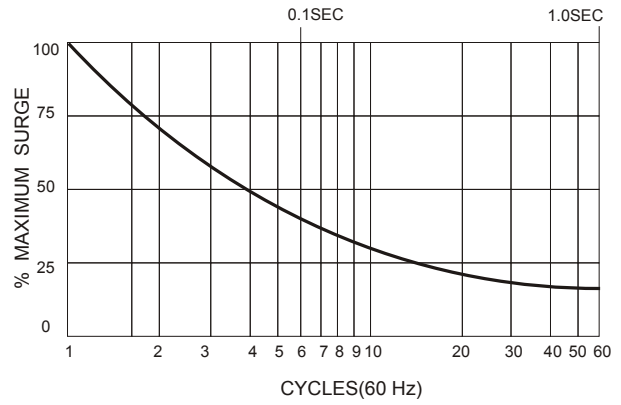
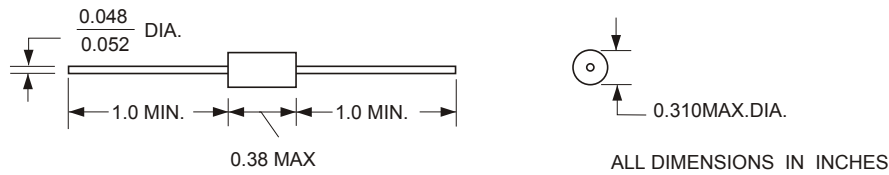


FIG.3

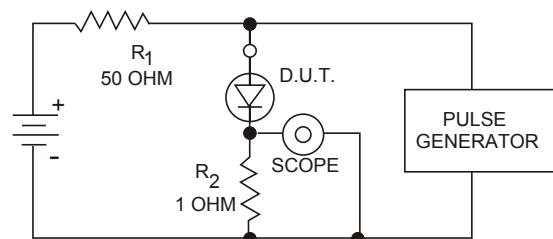
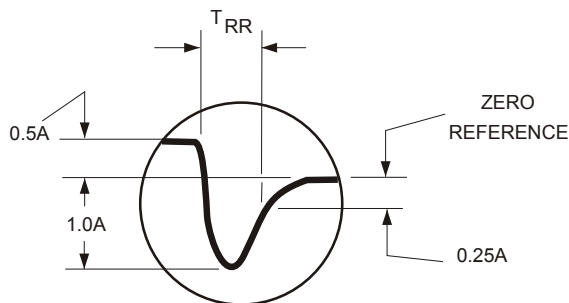


Maximum lead and terminal temperature for soldering, 3/8 inch form case, 5 seconds at 250 °C

TEST CIRCUIT

FIG.4

TYPICAL REVERSE RECOVERY WAVEFORM



R₁, R₂ NON-INDUCTIVE RESISTORS
 PULSE GENERATOR-HEWLETT PACKARD 214A OR EQUIV.
 1 KC REP.RATE, 10 μ SEC. PULSE WIDTH
 ADJUST PULSE AMPLITUDE FOR PEAK I_R